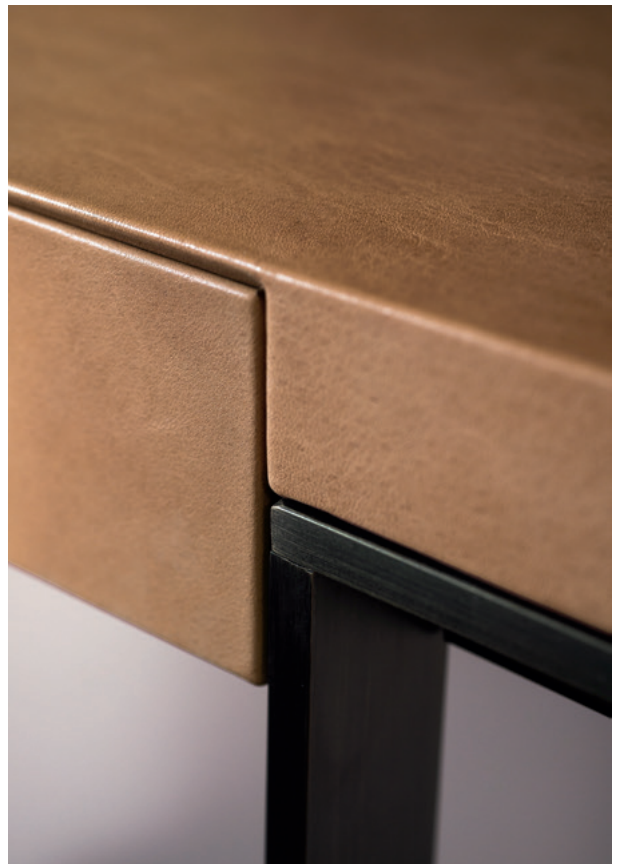


YVES
ROBERTO LAZZERONI









Struttura: struttura in MDF con rivestimento in pelle.

Piedi: base in metallo con vernice opaca.

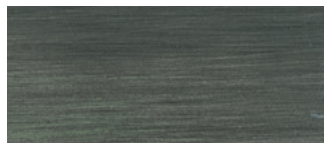
Frame: MDF frame with leather upholstery.

Feet: base in metal with matte varnish.

FINITURE DISPONIBILI/AVAILABLE FINISHES



metallo ottonato satinato
satin brass-coated metal



metallo brunito spazzolato a mano
hand-finished burnished metal

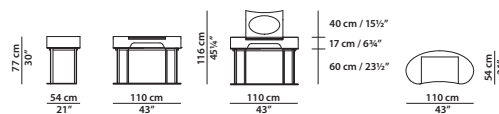


metallo nichelato satinato
satin nickeled metal

110 x 54 h77 cm - 43 x 21 h30"

Dressing table. Struttura vani interni in lamiera rivestita in pelle. Piano apribile a ribalta con specchio ovale.

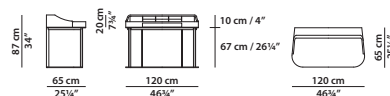
Dressing table. Internal cubby frame in metal sheet covered with leather. Opening table top with oval mirror.



120 x 65 h87 cm - 46¾ x 25¼ h34"

Scrivania. Cassettoni in palissandro India con finitura opaca e struttura decorativa in metallo.

Writing table. Little drawers in India rosewood with matte finishing and decorative structure in metal.



140 x 40 h76 cm - 54½ x 15½ h29¾"

Consolle. Struttura vano cassetto laccata.

Console. Varnished internal cubby structure.

